

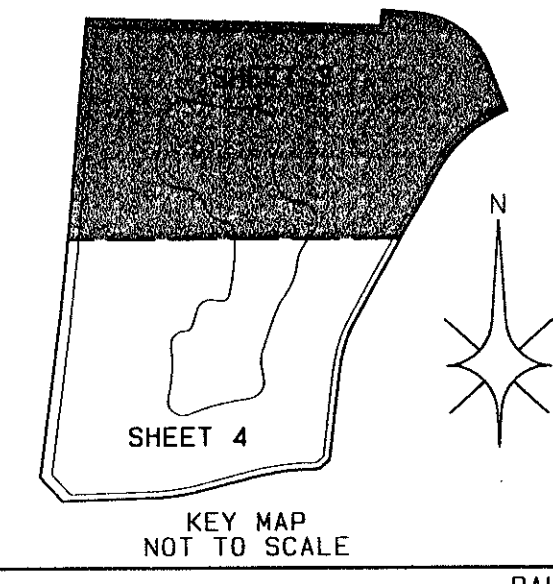
0669-004

ST. ANDREWS AT THE SPRINGS

A PORTION OF JOG ROAD RESIDENTIAL P.U.D.
SITUATED IN THE SOUTHEAST QUARTER OF SECTION 10, TOWNSHIP 45 SOUTH,
RANGE 42 EAST, PALM BEACH COUNTY, FLORIDA

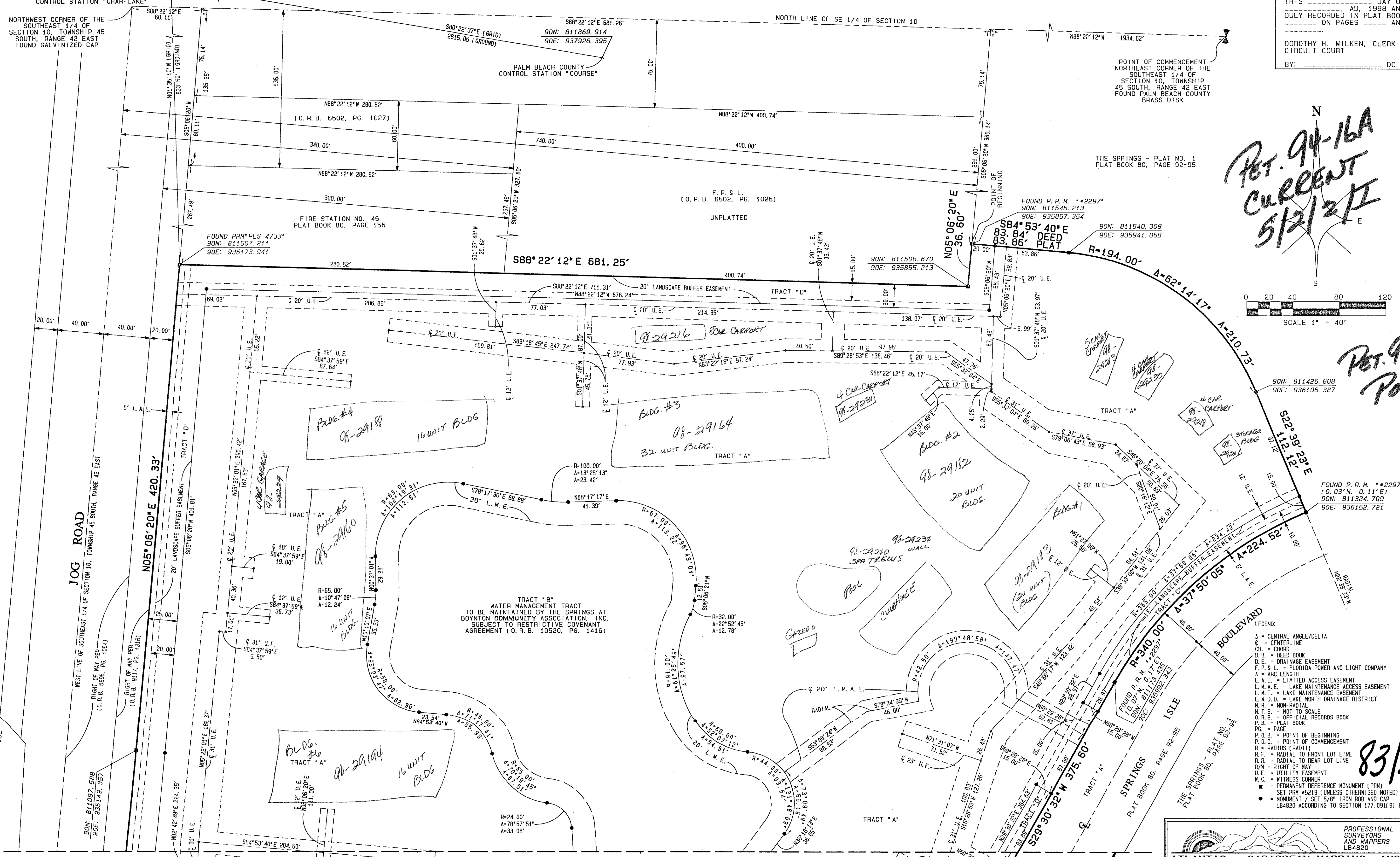
SHEET 3 OF 4

MAY 1998

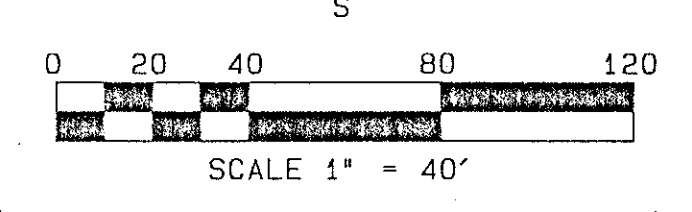


STATE OF FLORIDA } SS
COUNTY OF PALM BEACH }
THIS PLAT WAS FILED FOR
RECORD AT _____ DAY OF
THIS _____ AD, 1998 AND
DULY RECORDED IN PLAT BOOK
_____ ON PAGES _____ AND

DOROTHY H. WILKEN, CLERK
CIRCUIT COURT
BY: _____ DC



*RET. 94-16A
CURRENT
5/21/11*



*RET. 94-16A
POD A*

83/26

LAKE CHARLESTON PLAT NO. 2
PLAT BOOK 60, PAGES 140-142

JOG ROAD RESIDENTIAL
PLAT BOOK 56, PAGES 186-192

JOG ROAD

N05°06'20"E 420.33'

N05°06'20"E 420.33'

N05°06'20"E 420.33'

N05°06'20"E 420.33'

N05°06'20"E 420.33'

N05°06'20"E 420.33'

N05°06'20"E 420.33'

N05°06'20"E 420.33'

N05°06'20"E 420.33'

N05°06'20"E 420.33'

N05°06'20"E 420.33'

N05°06'20"E 420.33'

N05°06'20"E 420.33'

N05°06'20"E 420.33'

N05°06'20"E 420.33'

N05°06'20"E 420.33'

N05°06'20"E 420.33'

N05°06'20"E 420.33'

N05°06'20"E 420.33'

N05°06'20"E 420.33'

N05°06'20"E 420.33'

N05°06'20"E 420.33'

N05°06'20"E 420.33'

N05°06'20"E 420.33'

N05°06'20"E 420.33'

N05°06'20"E 420.33'

N05°06'20"E 420.33'

N05°06'20"E 420.33'

N05°06'20"E 420.33'

N05°06'20"E 420.33'

N05°06'20"E 420.33'

MATCH LINE SEE SHEET 4 OF 4

0669-004

PROFESSIONAL SURVEYORS AND MAPPERS LB4820
ATLANTIC - CARIBBEAN MAPPING, INC.
3052 JOG ROAD - GREENACRES, FLORIDA 33467
(561) 964-7884; FAX (561) 964-1969